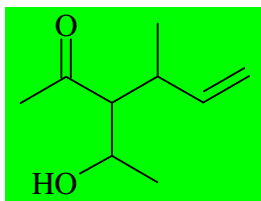


INTERROGATION ÉCRITE DE CHIMIE

Corrigé

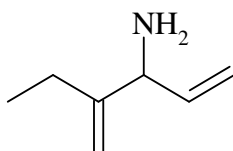
Dessiner la molécule suivante en représentation topologique :

3-(1-hydroxyéthyl)-4-méthylhex-5-én-2-one



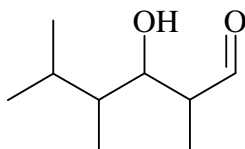
Nommer les molécules suivantes :

1)



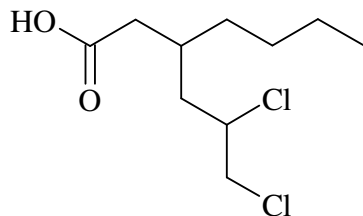
2-éthylpenta-1,4-diène-3-amine

2)



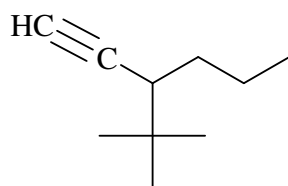
3-hydroxy-2,4,5-triméthylhexanal

3)



acide 3-(2,3-dichloropropyl)heptanoïque

4)



3-tertiobutylhex-1-yne